

# Graduate Funding

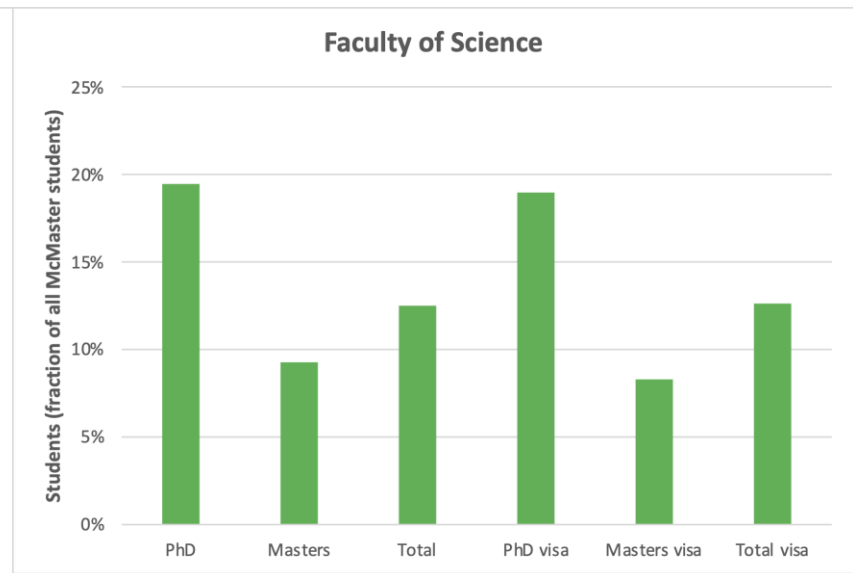
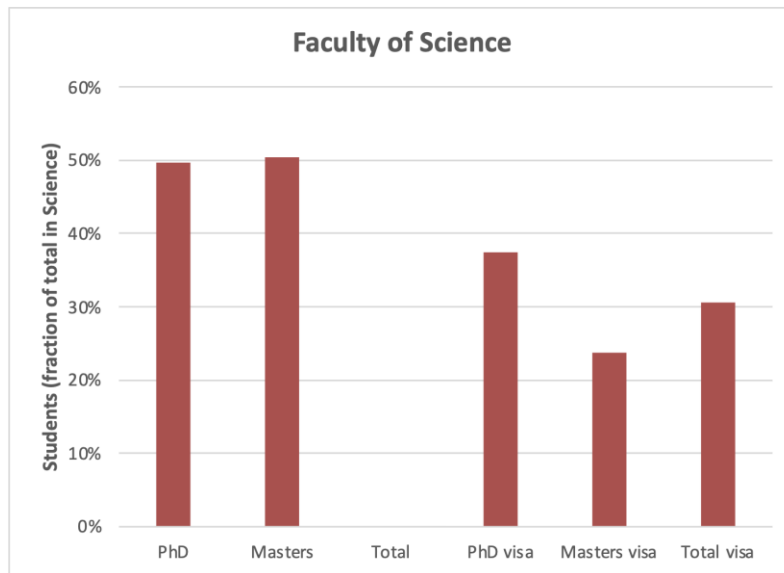
Faculty of Science

*May 4, 2023*



# Enrollment and its impact on revenue and resources

- Faculty of Science graduate student population (Nov 2022 data)
  - Total: **677** (69% domestic, 31% international)
  - MSc: **341** (76% domestic, 24% international)
  - PhD: **336** (63% domestic, 37% international)



# Enrollment and its impact on revenue and resources

- Only domestic students attract government core grants. Graduate program budget consists of scholarship funds from SGS (in-time domestic student count) and TA funds from the Faculty of Science (all in-time students).
- Science contributes significant financial resources to support domestic and international students (e.g., equalized tuition of international PhD students, career and mentorship services, support staff, etc.).
- Operational expenses for a student's thesis work and training are heavily reliant upon research funding.

# Funding sources

- Supervisors in the Faculty of Science receive grants from a variety of federal, provincial, and industry sources.
- The majority of funding comes from the tri-council agencies (NSERC, SSHRC, and CIHR).
- Domestic students receive scholarships from tri-council agencies as well.
- In Science, supervisor contribution towards graduate student funding varies significantly (12% - 72% of funding package; based on 2021-22 funding framework data).
- A significant portion of student funding consists of TAsip. Science contributed \$8.4M in 2022-23 from the operating allocation towards TAsips for in-time graduate students.
- International PhD students pay the same tuition as domestic students (in-time PhD tuition \$6,307; Domestic master \$6,307, International research master tuition \$17,096).
- International MSc students typically receive additional support from their department to cover high tuition.

# Graduate Student Funding Package

- Majority of funding offered to research graduate students (PhD, MSc) is a scholarship, given to attract a student to carry out their degree-based studies in a faculty member's research team.
- Nearly all in-time research students (except for a few with high-value scholarships/awards) are employed for one or two terms per year as a TA; TA needs and capacities vary across Units. The TAships have some flexibility in the hours. A student may receive Research Assistanship (RAship) in lieu of the TAship.
- Minimum funding – PhD: tuition + \$13,500 (under discussion in the Faculty to increase to \$17,500); MSc: varies depending on the type of program, i.e., thesis-based, course-based, or project-based.
- Course-based and project-based students have no research supervisor and typically do not contribute to the research mission of the Faculty. They may receive an entrance scholarship.

# Graduate Student Funding Range

- The table below shows the sum of scholarships and employment income, **minus tuition**, received by Science graduate students for 2021/2022 academic year.
- Each program/department has established its own minimum level of funding corresponding to its discipline that is comparable to similar programs at other Ontario institutions.
- Funding packages are not same across programs/departments. The differences are reflected in research funding of supervisors, teaching needs of the unit, and major external scholarships awarded to students (e.g., tri-council).

DEPARTMENT	SCHOL_TYPE	DOMVISA	STATUS	Funding net of Tuition Fee			
				HEADCOUNT	P25	MEDIAN	P75
TOTAL DEPARTMENT	DRES	TOTAL Domestic/Visa	IN-TIME	275	\$19,649	\$22,594	\$27,754
TOTAL DEPARTMENT	DRES	TOTAL Domestic/Visa	FIFTH-YEAR	56	\$11,459	\$21,406	\$26,333
TOTAL DEPARTMENT	DRES	TOTAL Domestic/Visa	OVER-TIME	35	-\$1,051	\$8,846	\$16,055
TOTAL DEPARTMENT	MRES	TOTAL Domestic/Visa	YEAR 1	153	\$16,803	\$20,185	\$23,243
TOTAL DEPARTMENT	MRES	TOTAL Domestic/Visa	YEAR 2+	132	\$11,712	\$17,306	\$20,417

# Funding Break-Down for Science (based on data in the table)

- SGS/Dept (18%) refers to the Graduate Studies Scholarship
  - Funds are allocated to graduate programs in the proportion of enrolment (mostly domestic, some international)
  - Programs use these funds to support students
  - Also used for other activities such as travel awards, entrance awards, etc.
- Scholarship (18%) refers to external scholarship like OGS, CGS, etc. Includes international scholarships.
- Employment (37%) refers to TA (maximum two terms per year) provided to nearly every student. A supervisor can pay Research Assistantship (RA) to a student in lieu of TA funds.
- Research (27%) refers to the supervisor portion of funds.

